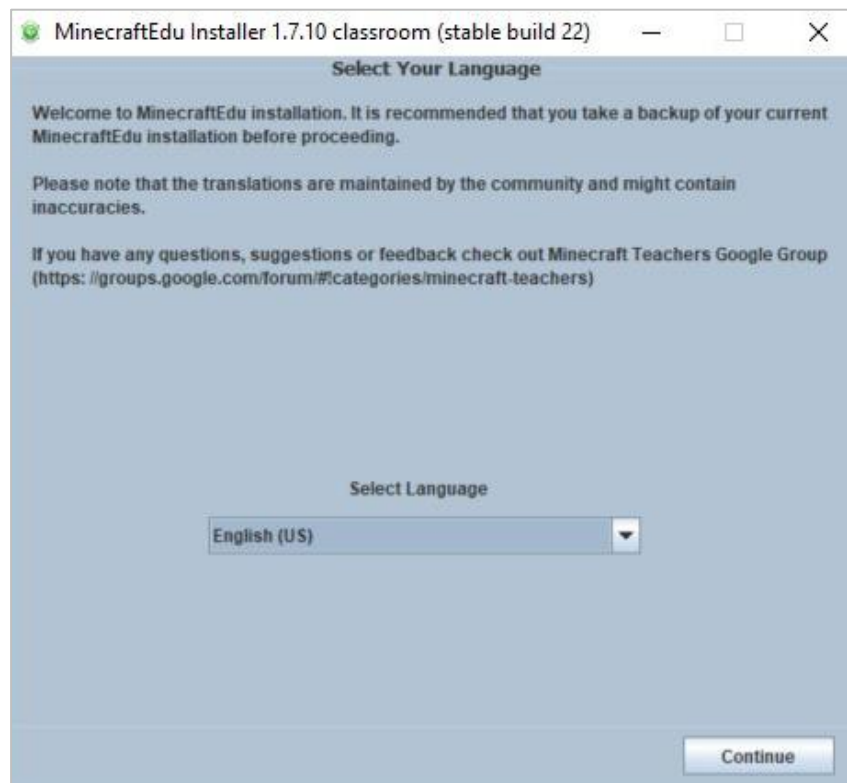


Installation Instructions MinecraftEdu



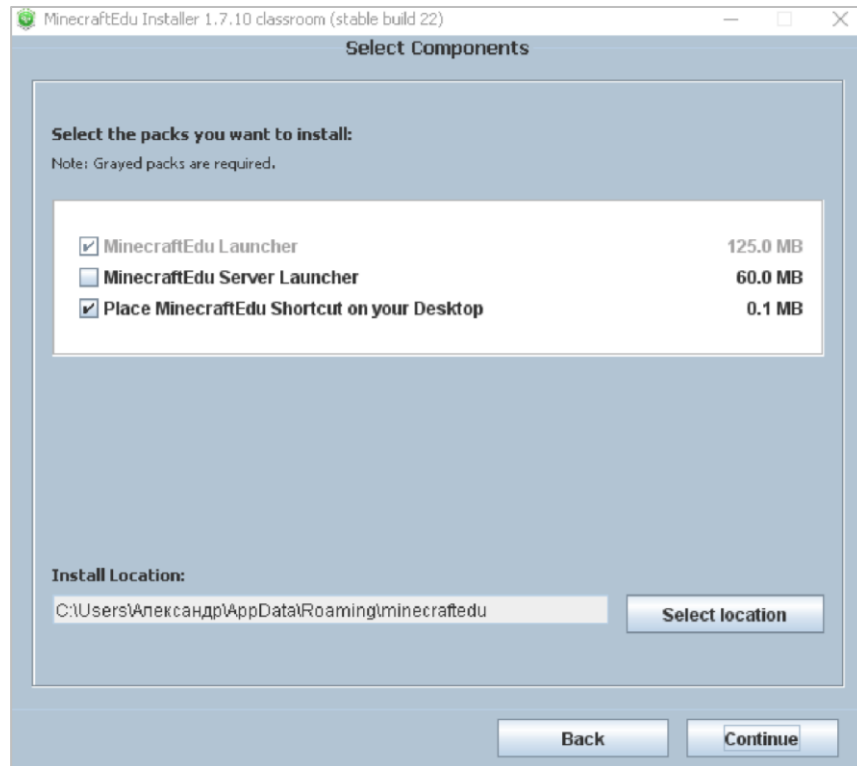
Installing and launching MinecraftEdu. Server creation.

1. Download and install Java from the official site <https://www.java.com/en/>
2. Open the `Minecrafteu_classroom_1.7.10_22_stable.jar` distribution using Java.
3. Select a language (you can change it later):



4. Click "Continue"; select "I accept the terms of this license agreement", click Continue.

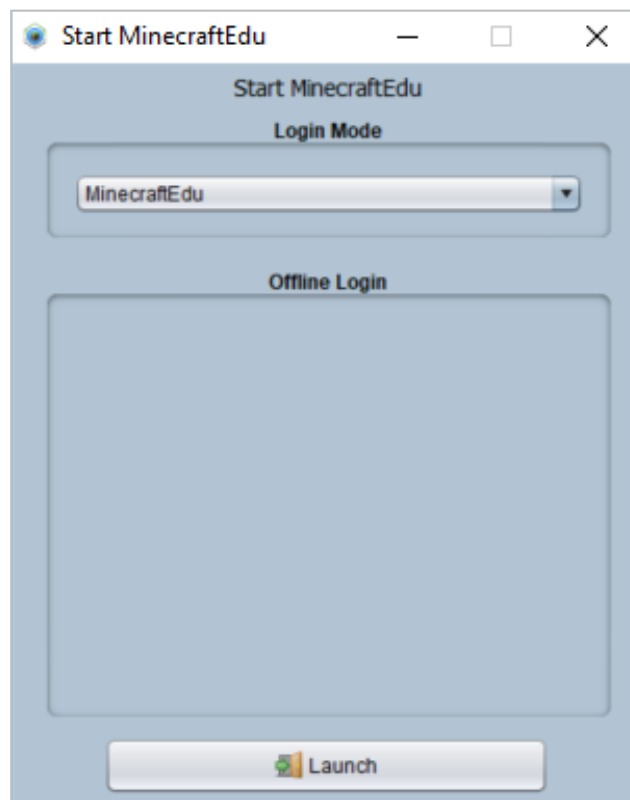
5. If you plan to create a server on the PC on which MinecraftEdu is installed, click the checkmark next to the phrase "MinecraftEdu Server Launcher".
6. Click "Continue":



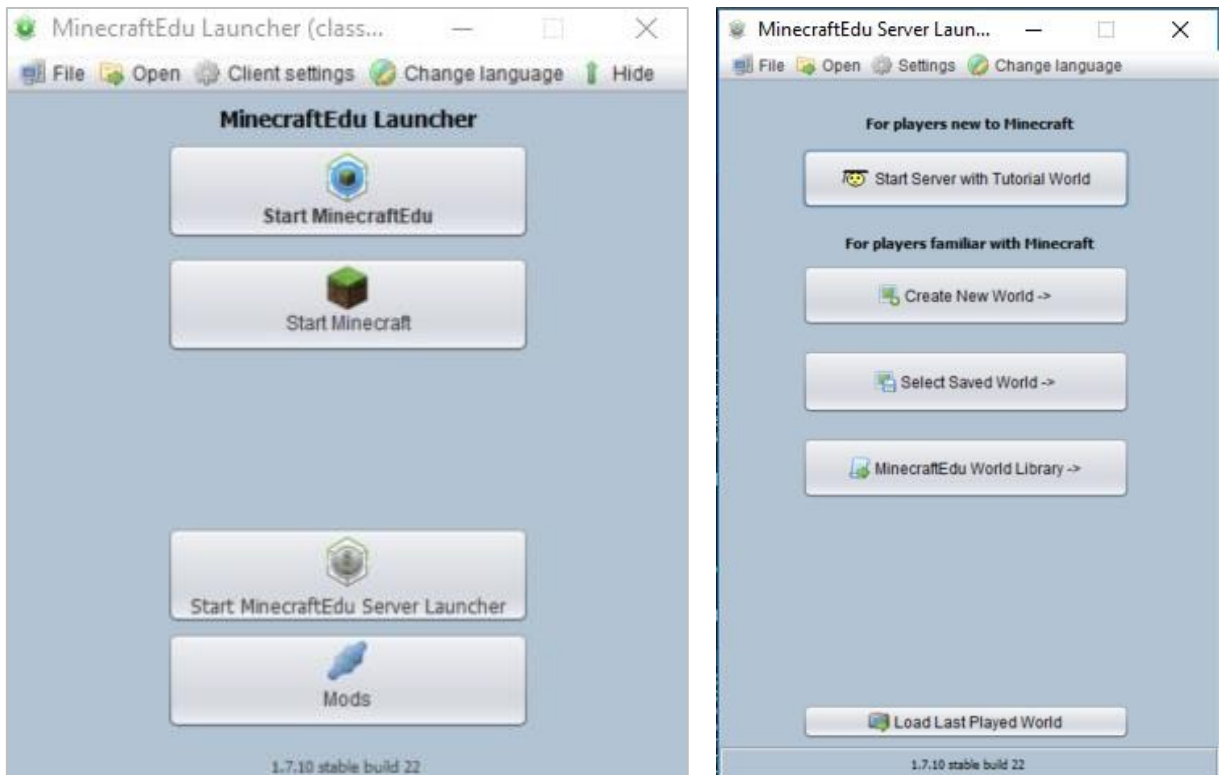
7. After installing the distribution on the desktop, the MinecraftEdu Launcher shortcut will appear. When it starts, this window opens:



8. To launch the Minecraft mode you need, click on the top button "Start MinecraftEdu"; in the window that opens, click "Launch":



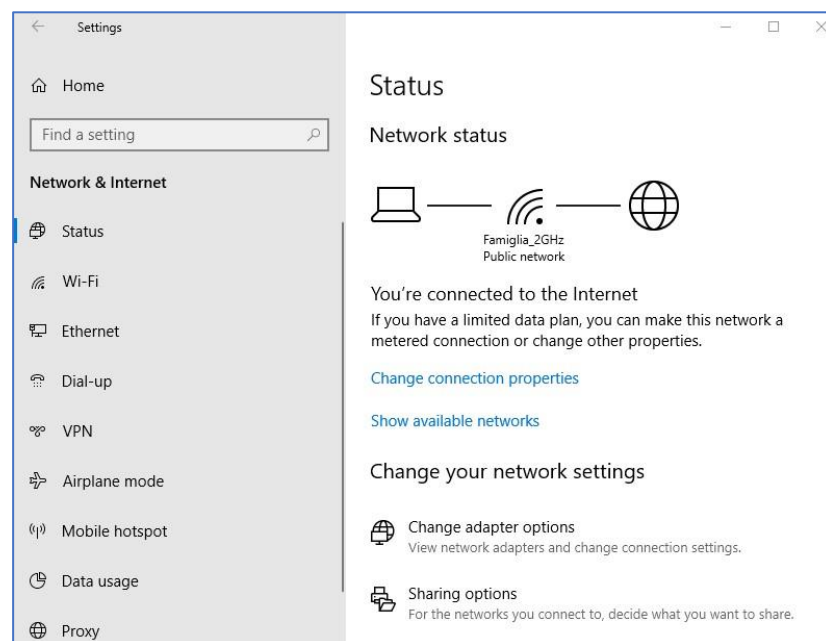
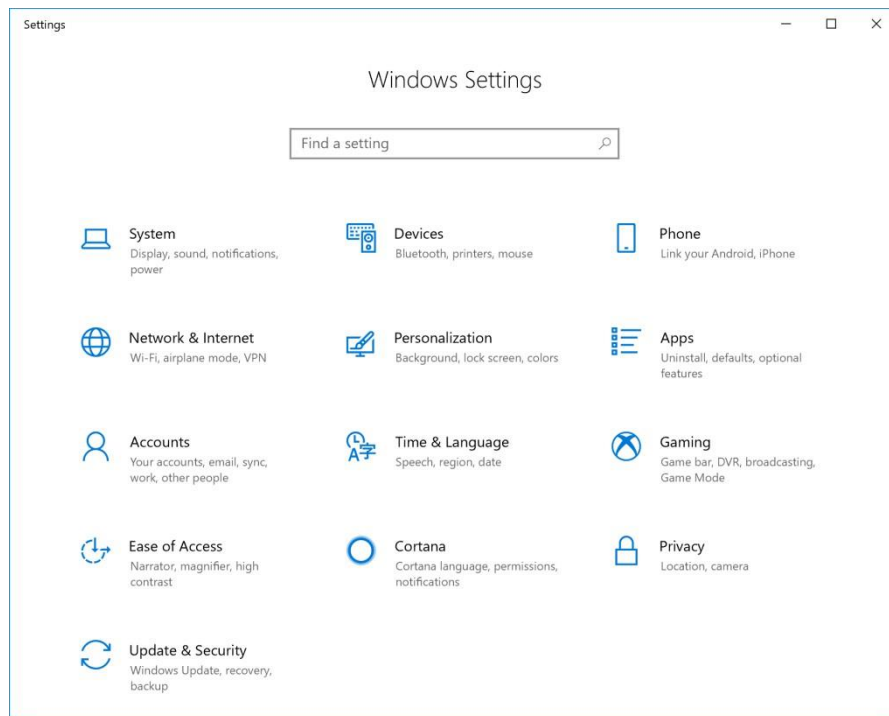
9. To create a server, you need to open MinecraftEdu Launcher a second time, click on the third button ("Start MinecraftEdu Server Launcher", or "Run the server startup program").

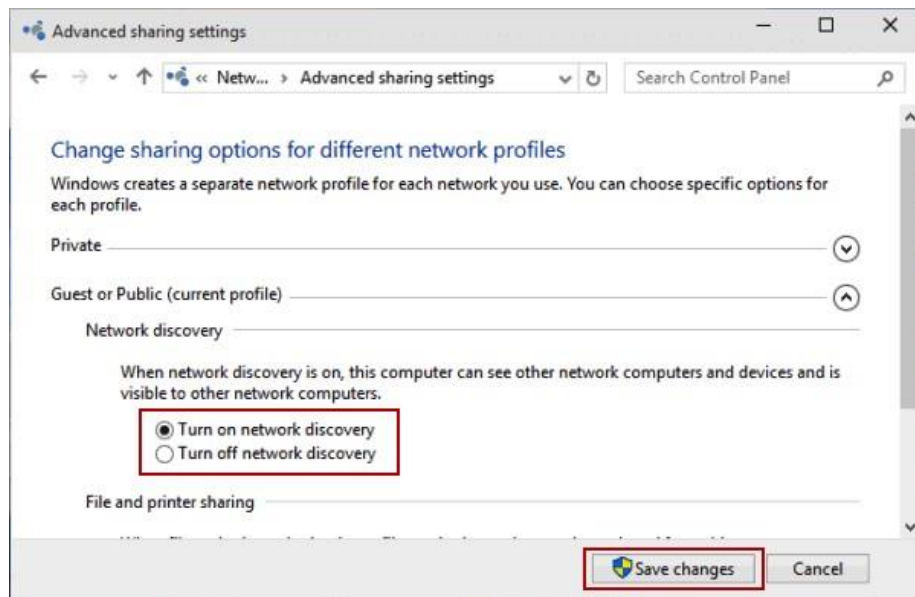


In the window that opens,

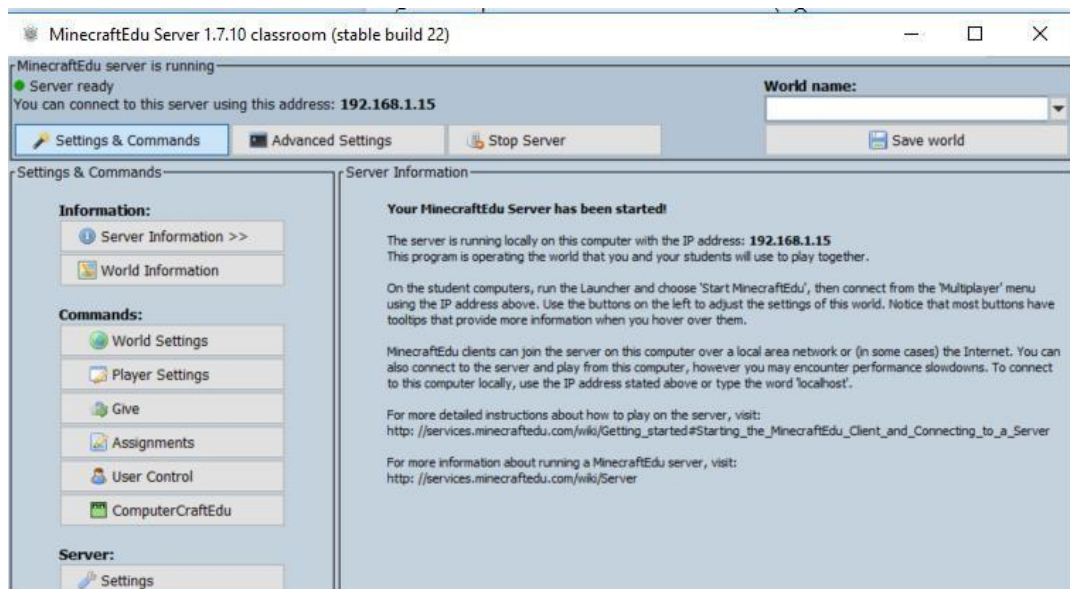
- the first button is the creation of a server with a Tutorial World;
- the second button - creating a server with a new world (with manual configuration of this world);
- the third button is to create a server with a previously saved world.

Note: so that people can connect to the same Wi-Fi network that PC is connected on which the server is created, you need to enable network detection in its settings (hereinafter step-by-step instructions for this action, Windows 10):
Computer settings - Network and Internet - Sharing options - Enable network discovery - Save changes:





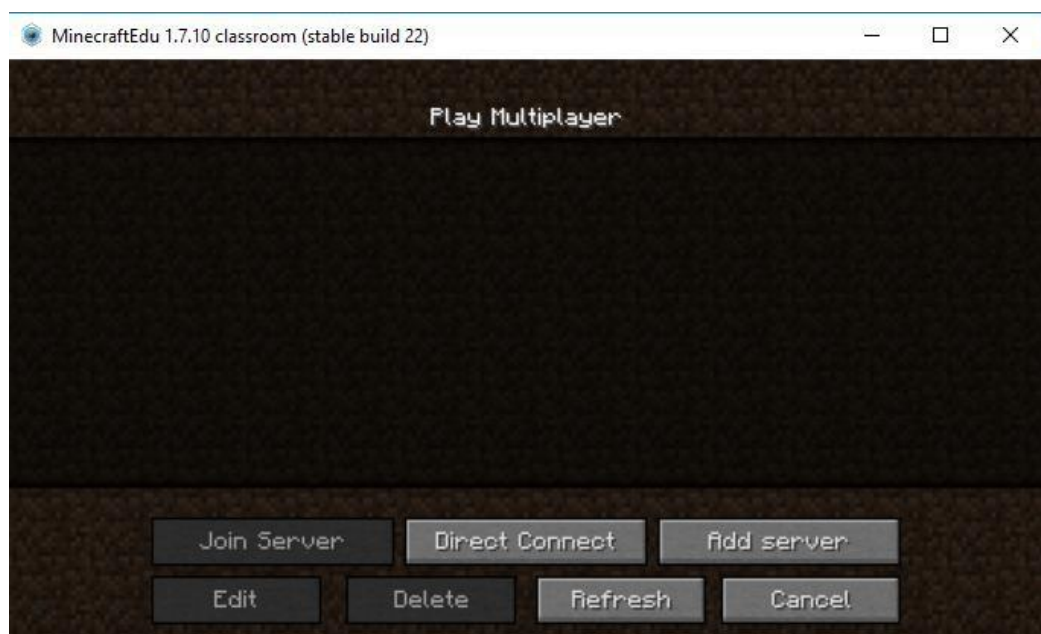
10. When you first create the server, you will be asked to enter the teacher password. It is necessary to enter the server as a teacher. After creating the server, a window opens in which is the IP address of the server. You can also change the world settings here (the same can be done through a game on the server); stop the server; save the world.



11. To enter the server, you need to click "Multiplayer" or "Network game":



Click "Direct Connect":



Enter the IP address of the server, click "Join Server" or "Connect"; if you are a teacher, then select the section "I am a Teacher" and enter the password; choose the skin of your character; click on the door.

12. If you entered the server as a teacher, then if you press the M button the teacher's menu will open



- 1) In the first tab, you can enable the Spectate mode or the creative mode of your character; add movement speed, teleport to the surface (if you are underground); teleport to respawn.
- 2) The second tab provides access to changing the settings of the world. You can change the game mode in the world, complexity, time of day; allow / prohibit fire and explosions, animals, monsters, settlers, weather effects, other dimensions.
- 3) On the third tab, you can change the settings of the players - enable / disable writing to chat, PvP (player versus player), respawn, building (and destruction) blocks, flight, teleport to the surface (if allowed, players can teleport to the surface in the same way as a teacher - through the menu using the M button); You can freeze / unfreeze players.
- 4) The fourth tab provides access to the personal settings of each server player - you can teleport yourself to someone or someone to yourself; freeze selected people or block access to chat; change the mode of the game. To the right are buttons that allow one touch teleport all players to themselves, freeze them or block access to chat.
- 5) Thanks to the fifth tab, you can transfer items to another player by nickname or all at once.
- 6) The sixth tab gives control over the students performing the tasks and the right to add new tasks.
- 7) The seventh tab contains a list of saved points in the game world, you can teleport your character to any of them.
- 8) The eighth tab contains tools for construction. You can put blocks or destroy on large distance; "Fill" the box with blocks (or clear it of all blocks) at two opposite vertices.
- 9) You can control turtles for beginners (green ones) through the ninth tab. You can completely ban them; disable visual program editor; freeze turtles; forbid to build; hand out to all players the control panel for turtles or mining turtles.